

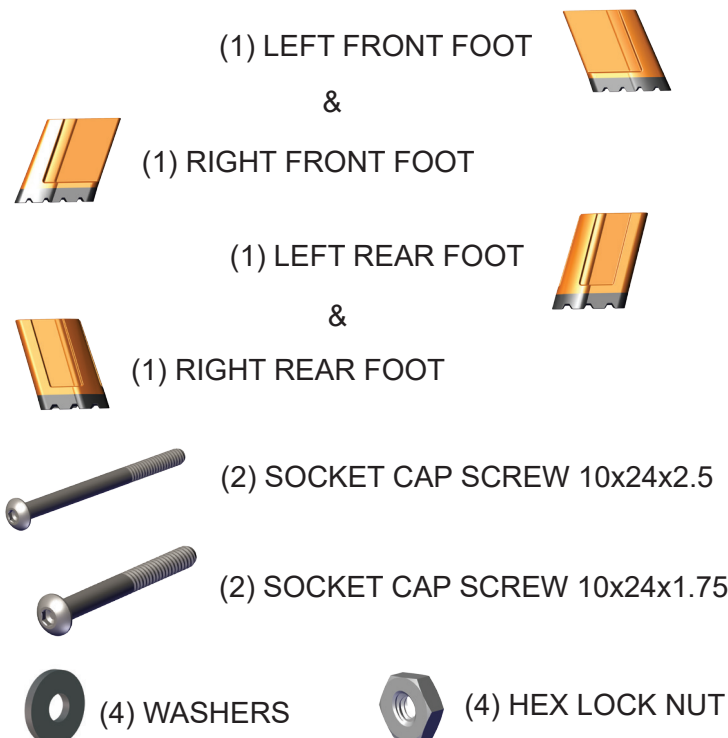
# FOOT REPLACEMENT

READ THESE INSTRUCTIONS COMPLETELY BEFORE YOU START. IF YOU DON'T UNDERSTAND THESE INSTRUCTIONS, PLEASE CALL 800-453-1192 FOR ASSISTANCE.

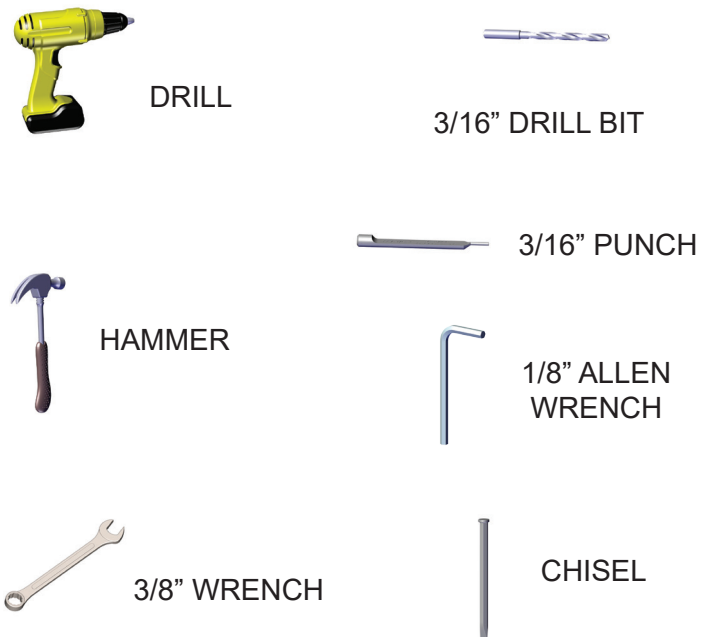
Procedure for replacing the feet on Little Giant Ladder Systems **AIRWING** ladders.

1. Failure to comply with all instructions may result in serious injury.
2. Make sure this kit is compatible with your ladder. If you have any questions concerning the use of this kit on Little Giant Ladder Systems products, call 800-453-1192 for assistance.
3. Before installing this kit, identify all kit components. If any components are missing or damaged, please contact Customer Care. Do not substitute any components.
4. Inspect the ladder before installing this kit. Repair or replace any damaged or missing ladder parts before using the ladder. Use only Little Giant Ladder Systems repair or replacement parts. If you are unable to repair it, discard the ladder.

## COMPONENTS IN KIT



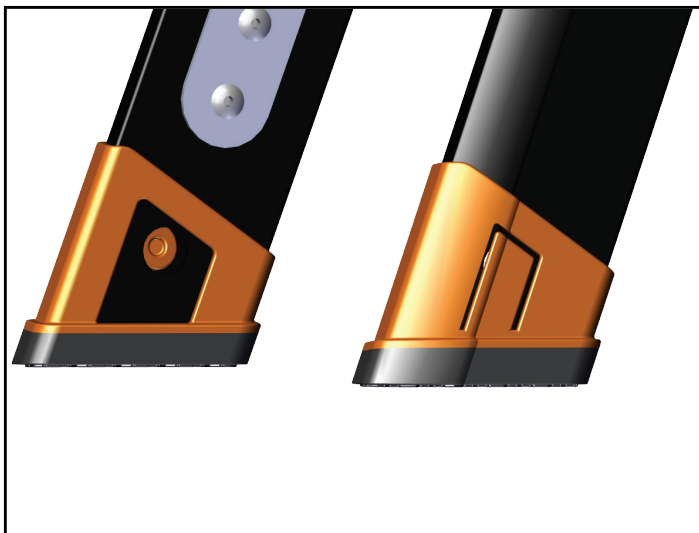
## TOOLS NEEDED



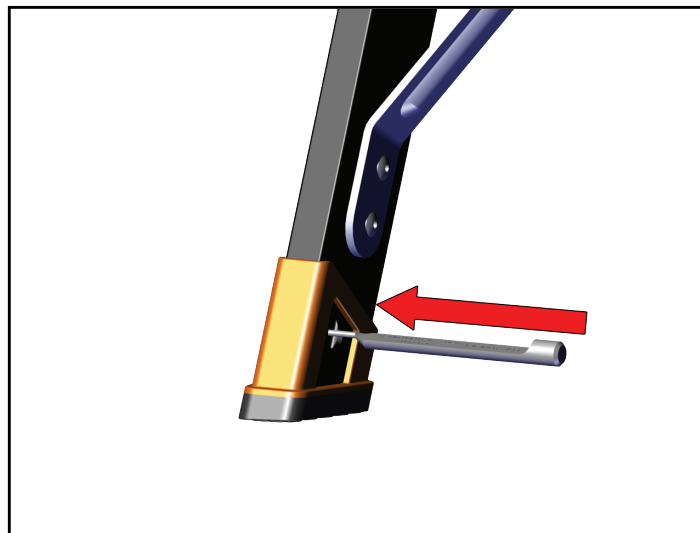
NOTE: IF ANY OTHER PART OF THE LADDER IS DAMAGED BEFORE OR DURING THE PROCESS OF INSTALLING AND/OR REPAIRING, DISCARD THE LADDER OR CONTACT CUSTOMER CARE FOR INSTRUCTIONS.

**DO NOT USE A DAMAGED LADDER!**

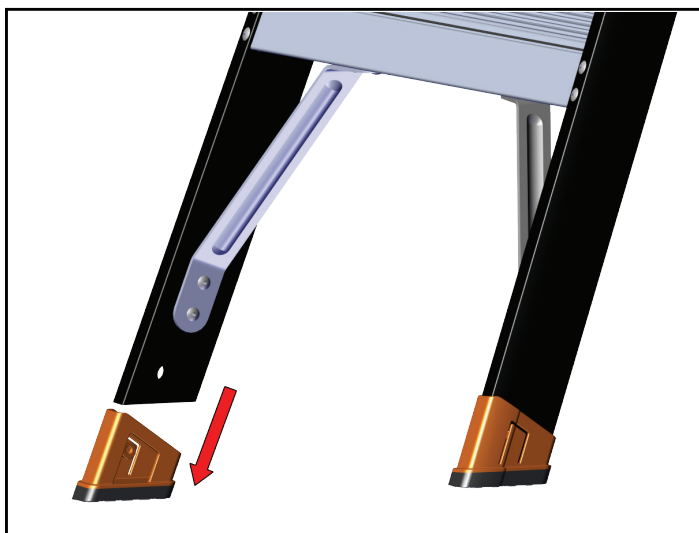
## REPLACING SNAP-ON FEET:



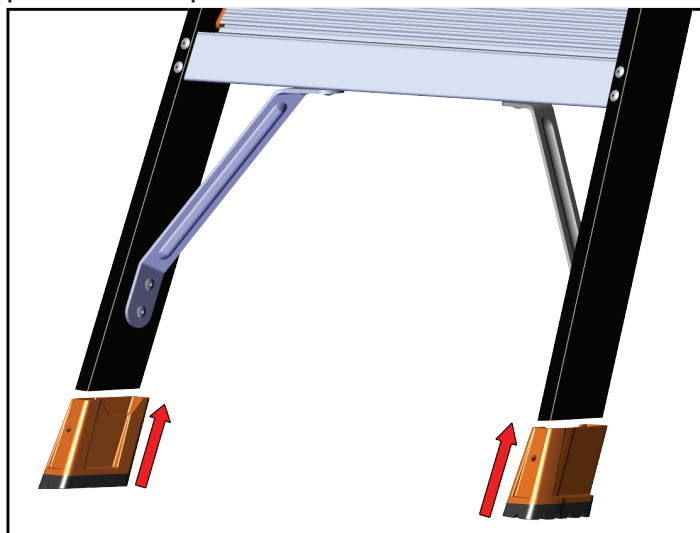
A1. Identify the feet to be replaced. NOTE: All four feet should be replaced at once.



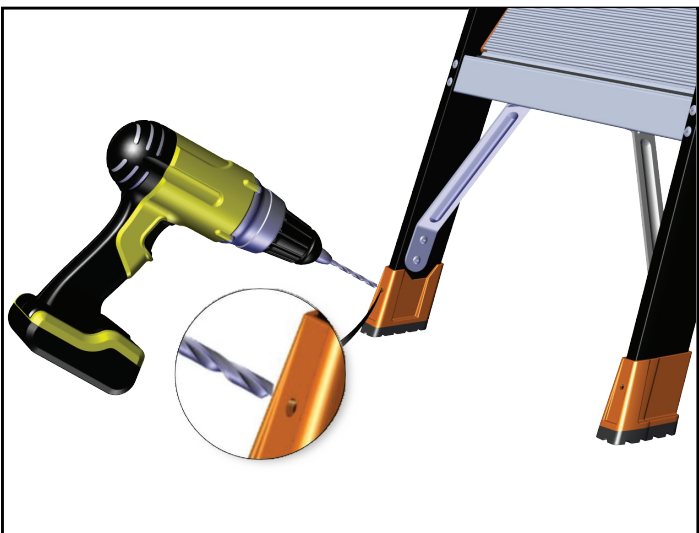
A2. To disengage the snap-on feet, stick a punch through the holes on the insides of the rails, and push the snap tabs of the feet outward.



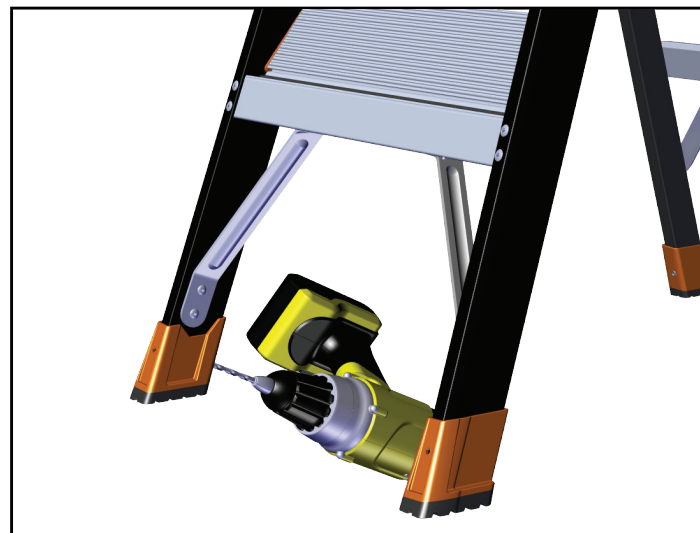
A3. While holding the tabs out, pull the feet down and off the ladder. Remove and discard all four of the old feet.



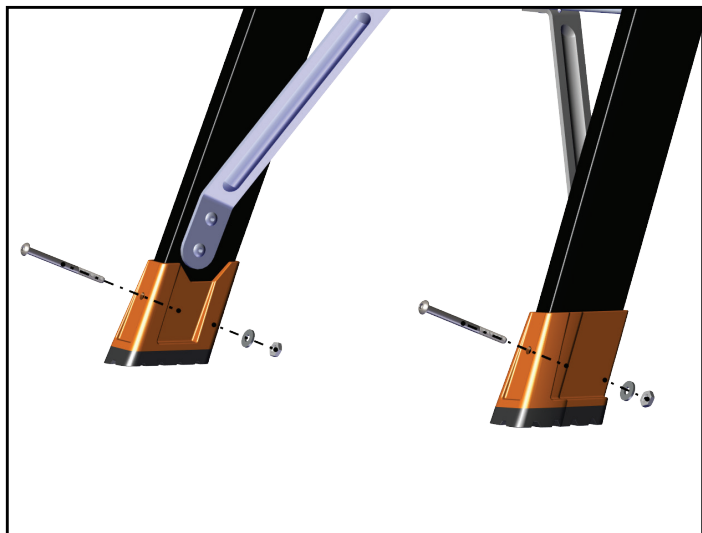
A4. Slide the new feet on.



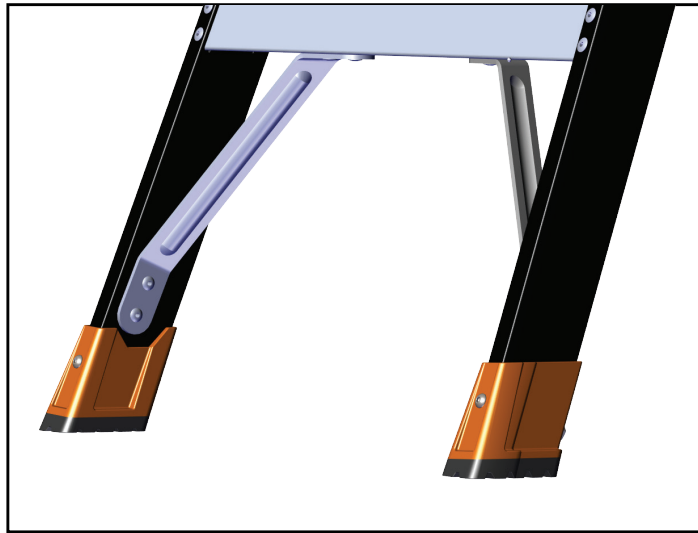
A5. Use the holes in the front of the feet as guides to drill through the front flanges of the rails.



A6. Use the holes in the back of the feet as guides to drill through the rear flanges of the rails.



A7. Align the fasteners in the order shown above, and tighten using a 3/8" wrench and 1/8" Allen wrench. NOTE: The longer screws are for the front feet, and the shorter ones are for the rear feet. The nuts and washers all go to the inside of the ladder rails.

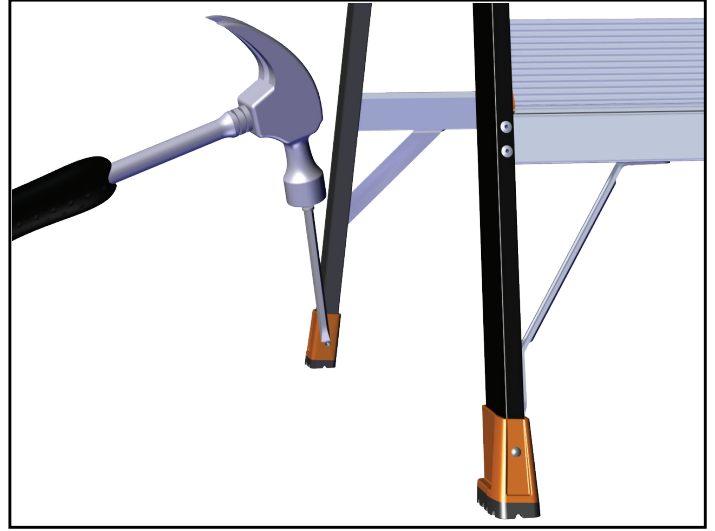


A8. Make sure that all four feet are secure and the ladder sits level before climbing.

## REPLACING RIVETED FEET:



B1. Start by drilling out the clinches of the rivets. Take special care not to damage the fiberglass rails.



B2. If necessary, use a hammer and chisel, remove any remaining rivet clinch material.



B3. Next, use the hammer and a 3/16" punch to completely remove the rivets, then remove and discard the old feet. Finish by performing Steps A4, A7, and A8.